

MILON **87 - 69** HAVERFORD 2026

82%	18 / 22	FT	6 / 14	43%
62%	21 / 34	2FG	18 / 38	47%
36%	9 / 25	3FG	9 / 43	21%
52	42 - 10	Rb	24 - 16	40
	17	Tu	11	

Referees:

By Quarter	1	2	3	4
MILON	19	21	25	22
HAVERFORD 2026	18	20	15	16

End of Quarter	1	2	3	4
MILON	19	40	65	87
HAVERFORD 2026	18	38	53	69



HAVERFORD 2026

Coach: DOHERTY P.O., INGRAM J.G.

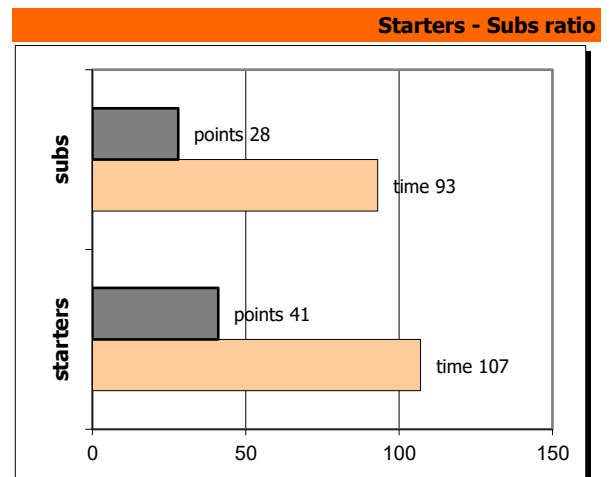
Fastbreaks: 4 / 7

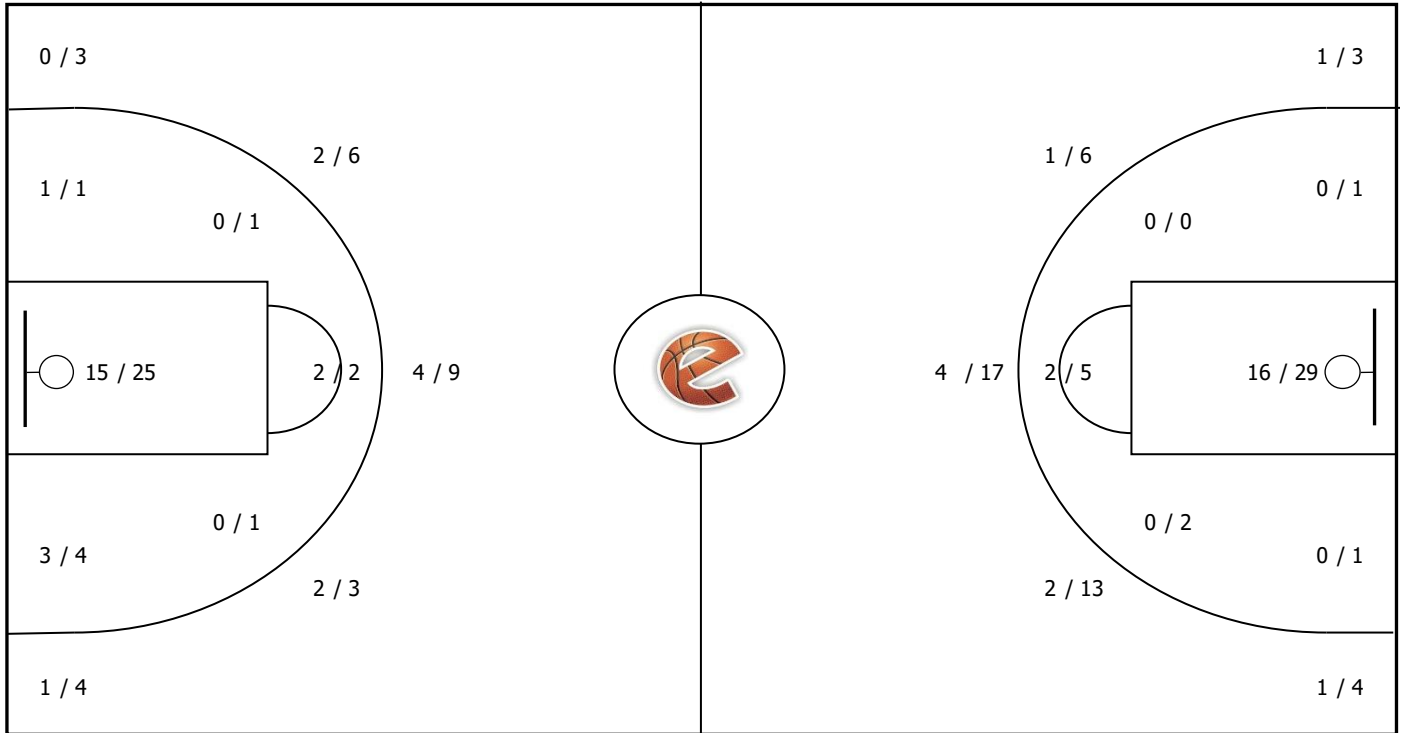
#	Player	Time (min)	Pts	Ft	2Fg	3Fg	+/-	Rbs		As	St	Tu	Bl	Fouls		Eff
								de	of					dr	co	
0	COLEMAN R.E.	22	2	0 / 0	1 / 3	0 / 5	-21	2	0	4	0	2	0	2	3	-1
5	WARREN C.Th.	23	6	0 / 2	0 / 2	2 / 7	-1	4	0	3	1	1	0	6	4	4
1	GEORGE Jr A.W.	15	2	0 / 1	1 / 1	0 / 1	7	0	1	0	3	1	0	0	0	3
3	VARGHESE I.S.	13	5	0 / 2	1 / 3	1 / 1	-5	3	1	1	0	0	0	2	0	6
21	KILIC K.E. - HO J.K.	20	2	0 / 0	1 / 1	0 / 8	-32	1	2	1	2	0	0	0	2	0
22	NOLAN T.M.	26	12	0 / 0	0 / 4	4 / 11	-2	0	1	2	3	1	0	0	1	6
10	UREMOVICH C.J.	15	5	1 / 1	2 / 3	0 / 0	-5	1	1	0	0	3	0	1	1	3
25	STRONG JACOBSON A.	21	16	2 / 2	7 / 10	0 / 2	-15	2	3	1	2	0	1	1	1	20
12	NAM H.A.	11	10	2 / 2	1 / 2	2 / 3	0	2	1	0	0	0	0	2	0	11
13	CHEUNG HERNANDEZ E.I	15	7	1 / 4	3 / 4	0 / 2	-12	2	0	2	0	1	0	3	4	4
34	HOCHMAN I.M.	5	0	0 / 0	0 / 0	0 / 2	3	1	0	0	0	0	0	0	1	-1
15	ANDERSON S.C.	14	2	0 / 0	1 / 5	0 / 1	-7	4	5	0	1	0	1	0	3	8
Team								2	1		2		0	0		
1st quarter			18	1 / 3	4 / 6	3 / 13	7	4	4	2	5	1	4	6	17	
2nd quarter			20	2 / 3	6 / 13	2 / 7	6	4	5	2	3	0	4	3	21	
3rd quarter			15	1 / 2	4 / 10	2 / 13	6	3	4	4	1	0	4	7	13	
4th quarter			16	2 / 6	4 / 9	2 / 10	5	5	1	4	2	1	5	4	13	
Final Stats		200	69	6 / 14	18 / 38	9 / 43	-90	24	16	14	12	11	2	17	20	64
				43%	47%	21%		40								

MILON

Coach:

#	Player	Pts	-	3s
4		4	-	0
-		0	-	0
-		0	-	0
7		27	-	5
22		18	-	2
22		4	-	0
10		4	-	0
11		7	-	0
		0	-	0
13		15	-	0
		0	-	0
77		8	-	2

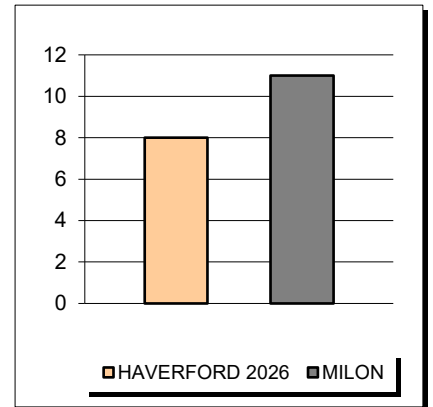
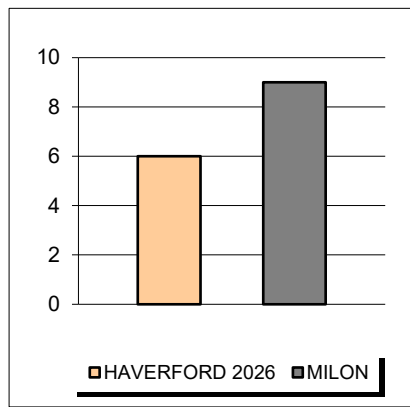
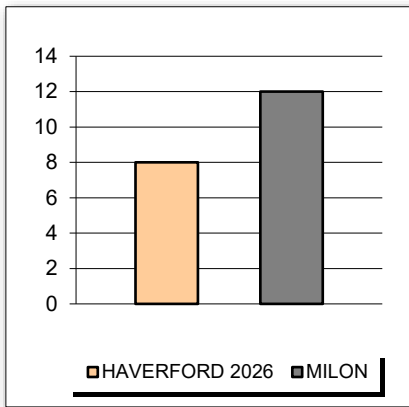




Fastbreak Pts

Turnover Pts

Second Chance Pts

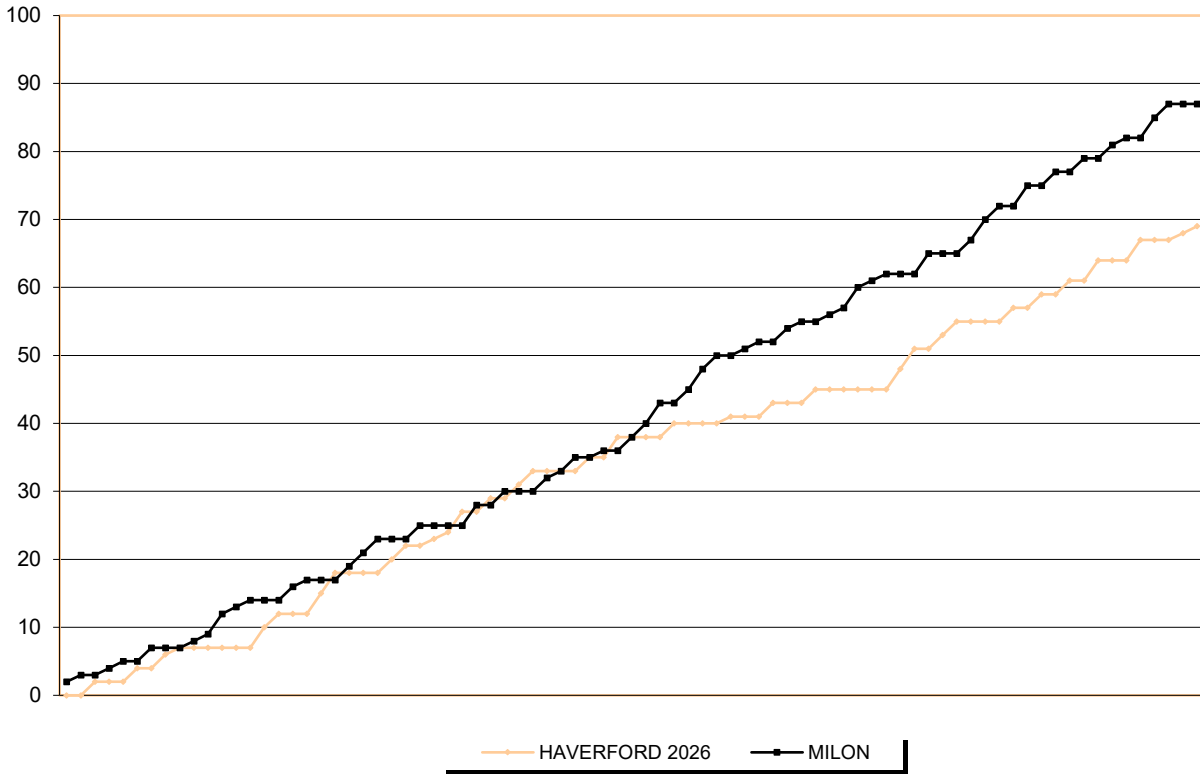


Notes

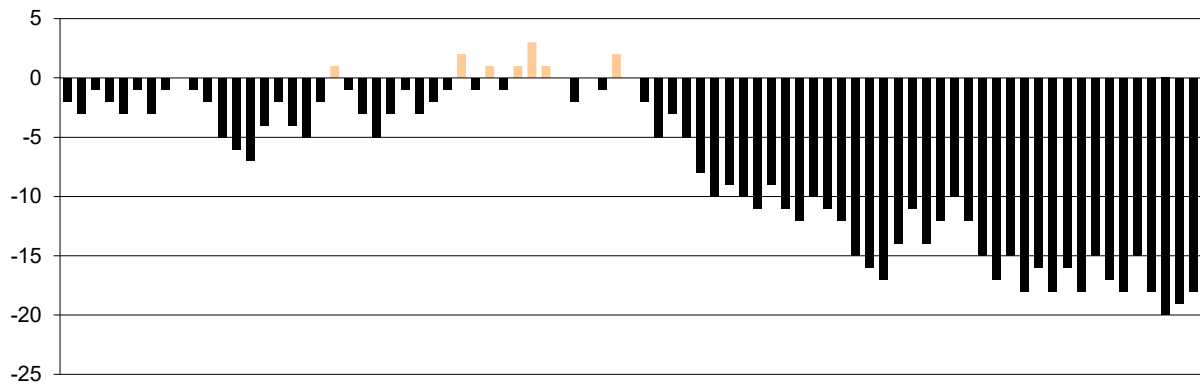
Notes section containing a large orange rectangular area.

**GRAPHIC STATS**

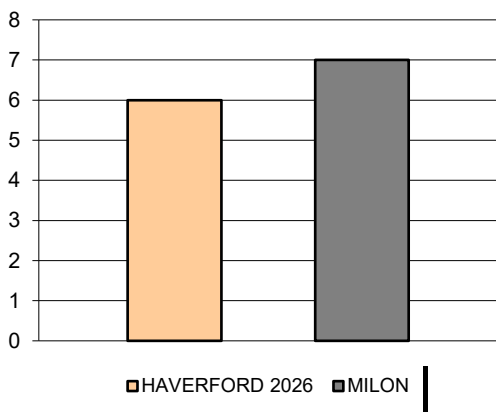
**SCORE EVOLUTION**



**SCORE DIFFERENCE**



**LARGEST SCORING RUN**



**LARGEST LEAD**

